



A Simpson Strong-Tie® Company

S&P CHEMICAL ANCHOR SYSTEMS

High performance fixing for
professional applications in
concrete and masonry



ResAC-16

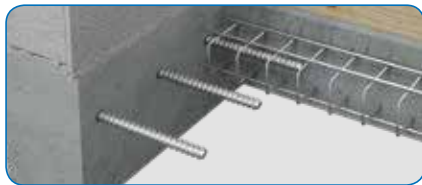
High performance methacrylate resin

ResAC-16 is a styrene free methacrylate resin suitable for high performance fixing applications in masonry and non-cracked concrete. Safe for use in indoor areas: VOC A+.

The colour of the mortar changes from blue to grey during the curing process. This colour change indicates that the anchor is immediately ready for loading.

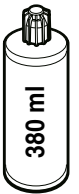
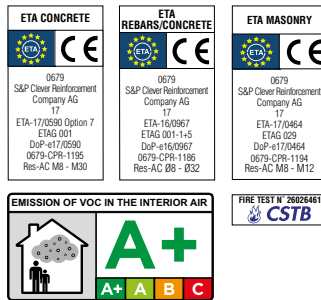
WHERE TO USE

- Non-cracked concrete
- Solid blocks
- Hollow blocks
- AAC Blocks
- Threaded rod and rebar connections
- Fixing on heavy metal structures
- Racking
- Balconies
- Facades



PERFORMANCE FEATURES

- Fast curing
- Low odour
- Non-flammable
- Easy to dispense
- High performance
- Colour changes when cured



ResEP-16

High performance epoxy resin

ResEP-16 is an epoxy based resin suitable for use in cracked or non-cracked concrete. It is also usable in seismic conditions.

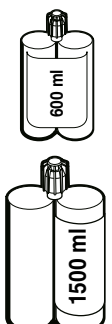
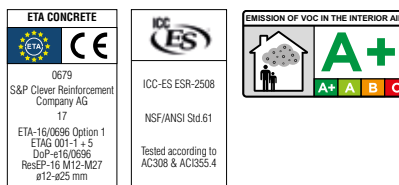
WHERE TO USE

- Concrete
- Heavy duty steel structures
- Structures requiring seismic protection



PERFORMANCE FEATURES

- Suitable for use in seismic areas
- Suitable for use in hot/humid conditions
- Ideal for large diameter holes



Devices and Aids

Threaded Rods



The threaded rods TRD and TRD-A4 are used in addition to the high performance resins and are recommended for use with our structural reinforcement anchoring materials.

WHERE TO USE

- Anchoring of structural reinforcement
- Concrete and natural stone
- Mounting racks, machines, fences, etc.

PERFORMANCE FEATURES

- Markings for optimal positioning
- Diameters: M8 bis M20
- Galvanized steel 5.8

	References	Item code	Ø Thread	Max. fixture thickness [tfix] [mm]	Max. fixture hole [df] [mm]	Lenght [L] [mm]
TRD	Steel threaded rod M8-95/20	TRD89520SP	8	20	9	95
	Steel threaded rod M10-120/25	TRD1012025SP	10	25	12	120
	Steel threaded rod M10-155/60	TRD1015560SP	10	60	12	155
	Steel threaded rod M12-150/35	TRD1215035SP	12	35	14	150
	Steel threaded rod M12-185/70	TRD1218570SP	12	70	14	185
	Steel threaded rod M16-170/20	TRD1617020SP	16	20	18	170
	Steel threaded rod M16-200/50	TRD1620050SP	16	50	18	200
	Steel threaded rod M20-240/50	TRD2024050SP	20	50	22	240
TRD-A4	Stainless steel threaded rod M8-95 /20 A4	TRDA489520SP	8	20	9	95
	Stainless steel threaded rod M10-120/25 A4	TRDA41012025SP	10	25	12	120
	Stainless steel threaded rod M10-155/60 A4	TRDA41015560SP	10	60	12	155
	Stainless steel threaded rod M12-150/35 A4	TRDA41215035SP	12	35	14	150
	Stainless steel threaded rod M12-185/70 A4	TRDA41218570SP	12	70	14	185
	Stainless steel threaded rod M16-170/20 A4	TRDA41617020SP	16	20	18	170
	Stainless steel threaded rod M16-200/50 A4	TRDA41620050SP	16	50	18	200
	Stainless steel threaded rod M20-240/50 A4	TRDA42024050SP	20	50	22	240

Mixing Nozzles and Extension tubes



The high-strength static mixing nozzle and extension tubes are designed for the use with all our adhesive products.

Plugs



The plugs are primarily required during overhead applications, such as the anchoring of carbon laminates on a deck.

Cleaning Brushes



The cleaning brushes have a twisted wire handle with nylon or steel bristles and are available in a range of diameters from 17 to 30 mm. They are used for cleaning drilled holes prior to inserting the adhesive.

Dust Pump



The dust pump is a must have, to ensure that holes drilled into concrete are free from dust before installing threaded rods or rebars with resin.

Manual and battery powered dispensing tools



Battery powered



Manual

The professional manual and electrical dispensing tools are built for ultimate durability, high volume use and maximum efficiency on the job. They are adapted for use with our 380, 600 and 1500 ml cartridges.

WHERE TO USE

- Chemical anchoring of threaded rods and steel rebars
- Silicone application for building and renovation work

PERFORMANCE FEATURES

- Ergonomic rubber handle with power saving reduction
- Reinforced gripping plates
- Adjustable cartridge holder

www.sp-reinforcement.eu

HEAD OFFICE

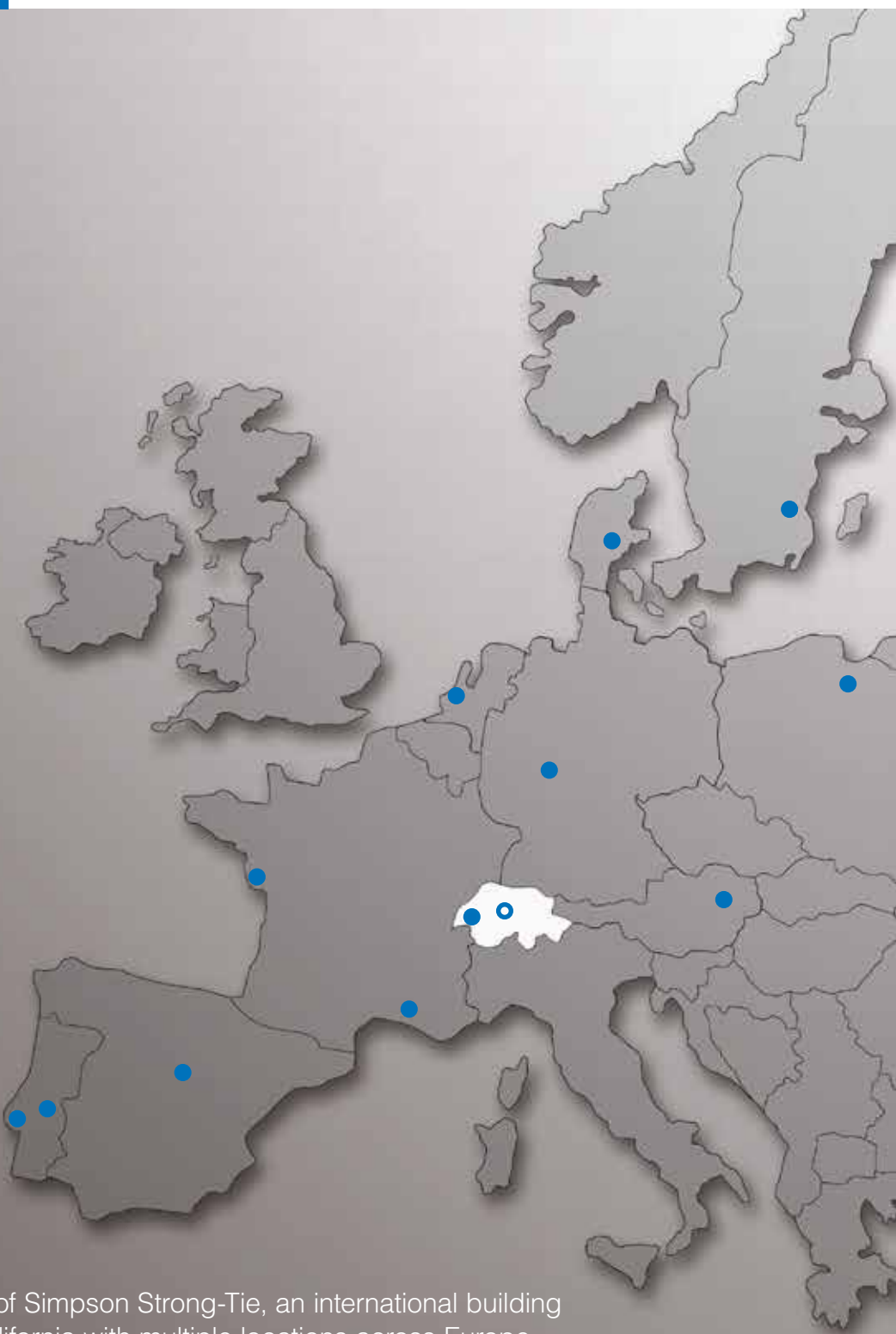
S&P Clever Reinforcement Company AG
 Seewernstrasse 127
 CH-6423 Seewen
 Phone: +41 41 825 00 70
 Fax: +41 41 825 00 75
 Web: www.sp-reinforcement.ch
 E-Mail: info@sp-reinforcement.ch

WESTERN SWITZERLAND

S&P Clever Reinforcement Company AG
 Chemin de Prairies 12
 CH-1630 Bulle
 Phone: +41 26 321 50 30
 Fax: +41 26 321 50 31
 E-Mail: info@sp-reinforcement.ch

OTHER LOCATIONS:

Austria
 Benelux
 Denmark
 France
 Germany
 Poland
 Portugal
 Spain
 Sweden



Since 2012 S&P has been part of Simpson Strong-Tie, an international building products company based in California with multiple locations across Europe.

Simpson Strong-Tie was founded in 1956 and has established itself as the world-wide leader in wood-to-wood, wood-to-steel and wood-to-concrete structural connectors. The company is committed to helping customers succeed by providing exceptional code-listed products, full-service engineering and field support, product testing and training, and on-time product delivery. With the acquisition of S&P, Simpson Strong-Tie continues to expand its offering to include a full array of concrete repair, protection and strengthening solutions. By combining the strengths of our two brands, Simpson Strong-Tie and S&P can offer the highest level of quality and service to meet all your concrete repair, strengthening and restoration needs. We look forward to working with you on your next project.

